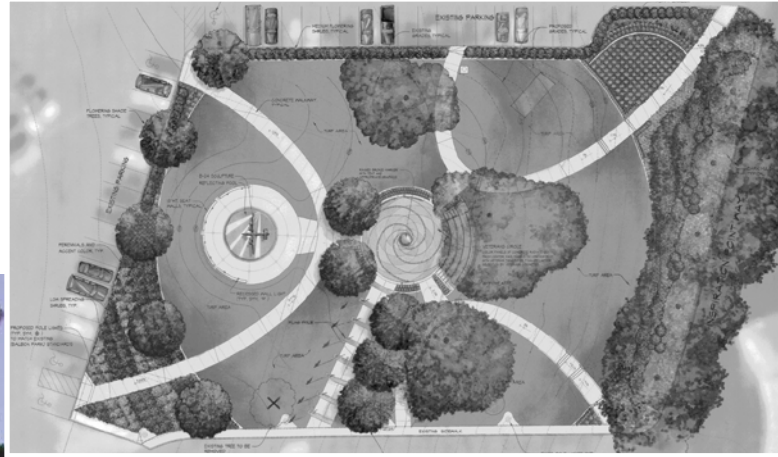


# Veteran's Museum and Memorial Center

San Diego, California





*Photo credit: David Reed Landscape Architects*

*Photo credit: David Reed Landscape Architects*

The Veterans Memorial Garden is situated on a one-acre parcel directly in front of the Veterans Museum and Memorial Center. Pathways lead to the Veterans Circle, a central gathering place reflecting the principles of DUTY • HONOR • COUNTRY with quotes from Presidents Washington, Lincoln and Coolidge. Phase I includes the terrazzo Veterans Circle and Amphitheater, the Air Garden and the initial portions of the Land and Sea Gardens. The Air Garden contains a reflecting pool with a bronze statue of a B-24 Liberator facing in the direction of the former Consolidated Aircraft Corporation Plant (Convair) that designed and built the B-24. The Air Garden pays tribute to both the crewmembers — ground and flight—and the citizens of San Diego who designed and built this historic aircraft.—all important to Allied WWII air power. It is the first memorial in a city park highlighting the B-24 Liberator. During WWII almost 40% of all B-24s were built in San Diego. Consolidated employed slightly more than 45,000 San Diego men and women in 1942—more than 15% of the total population at that time. The Garden is a testament to the ongoing relationship between the citizens of San Diego and the Veterans' community. B-24 Sculptor: Robert Henderson; Architect: Austin Veum Robbins Partners; Landscape by David Reed Landscape Architect; and Construction by Ghassan Construction Company. The B-24 Memorial and Veteran's Memorial Center and Museum are located at 2115 Park Blvd., in Balboa Park, San Diego. They can be reached at (619) 239-2300.